

# Standard

Jean Prouvé, 1934/1950



**Standard**

**Standard SP**

Chairs take the most stress on their back legs, where they bear the weight of the user's upper body. The engineer, architect and designer Jean Prouvé incorporated this simple insight in his design for the Standard Chair: while steel tubing suffices for the front legs, since they are subject to less stress, the back legs are made of voluminous hollow sections that transfer the primary weight to the floor.

Standard is available in the classic version with seat and backrest in wood or as the Standard SP model with seat and backrest in robust plastic.

The seat and backrest of the Standard Chair by Jean Prouvé are available in various types of robust wood, and the chair's striking metal frame comes in different colours. This understated, iconic design is a famous classic by the French 'constructeur'.

Made of high quality plastic, the seat shell and backrest of the Standard SP (Siège en Plastique) chair by Jean Prouvé are available in a range of contemporary colours. This gives the iconic classic a fresh and modern look. The colour options match those of the EM Table with high-pressure laminate top, but also suit many other tables.

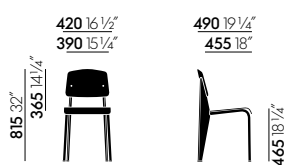
**Standard**

- **Seat and backrest:** oak (natural or dark finish) or walnut (black pigmented finish).
- **Base:** bent sheet steel and tubular steel, powder-coated finish (smooth).

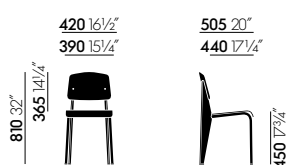
**Standard SP**

- **Seat and backrest:** ASA plastic (fine-textured).
- **Base:** bent sheet steel and tubular steel, powder-coated finish (textured).

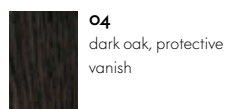
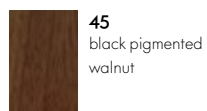
**DIMENSIONS** (in accordance with EN 1335-1)



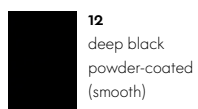
**Standard**



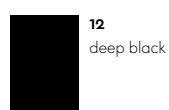
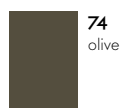
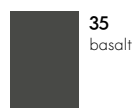
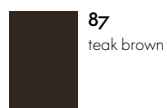
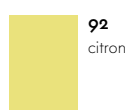
**Standard SP**



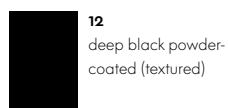
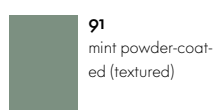
**Back and seat (Standard)**



**Base (Standard)**



**Back and seat (Standard SP)**



**Base (Standard SP)**

